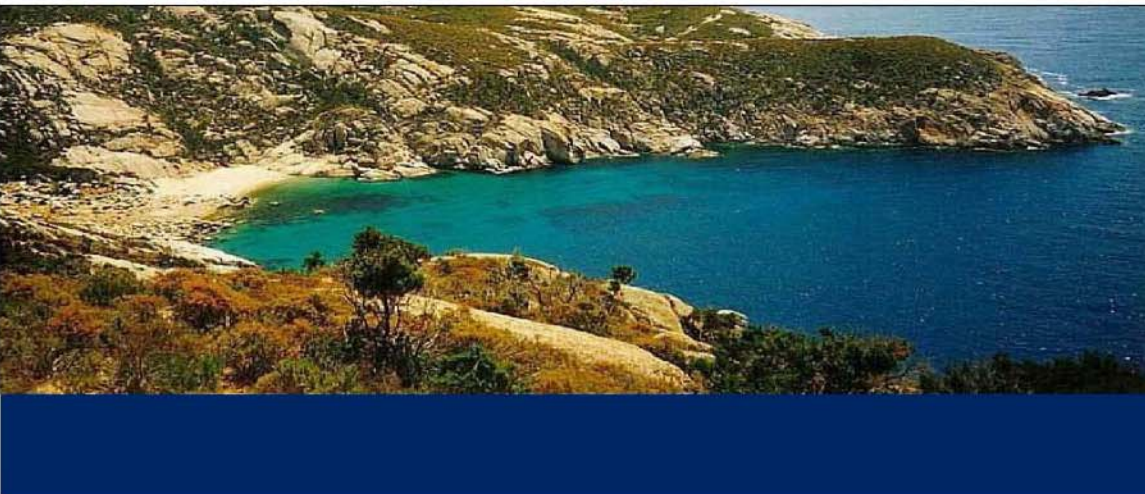
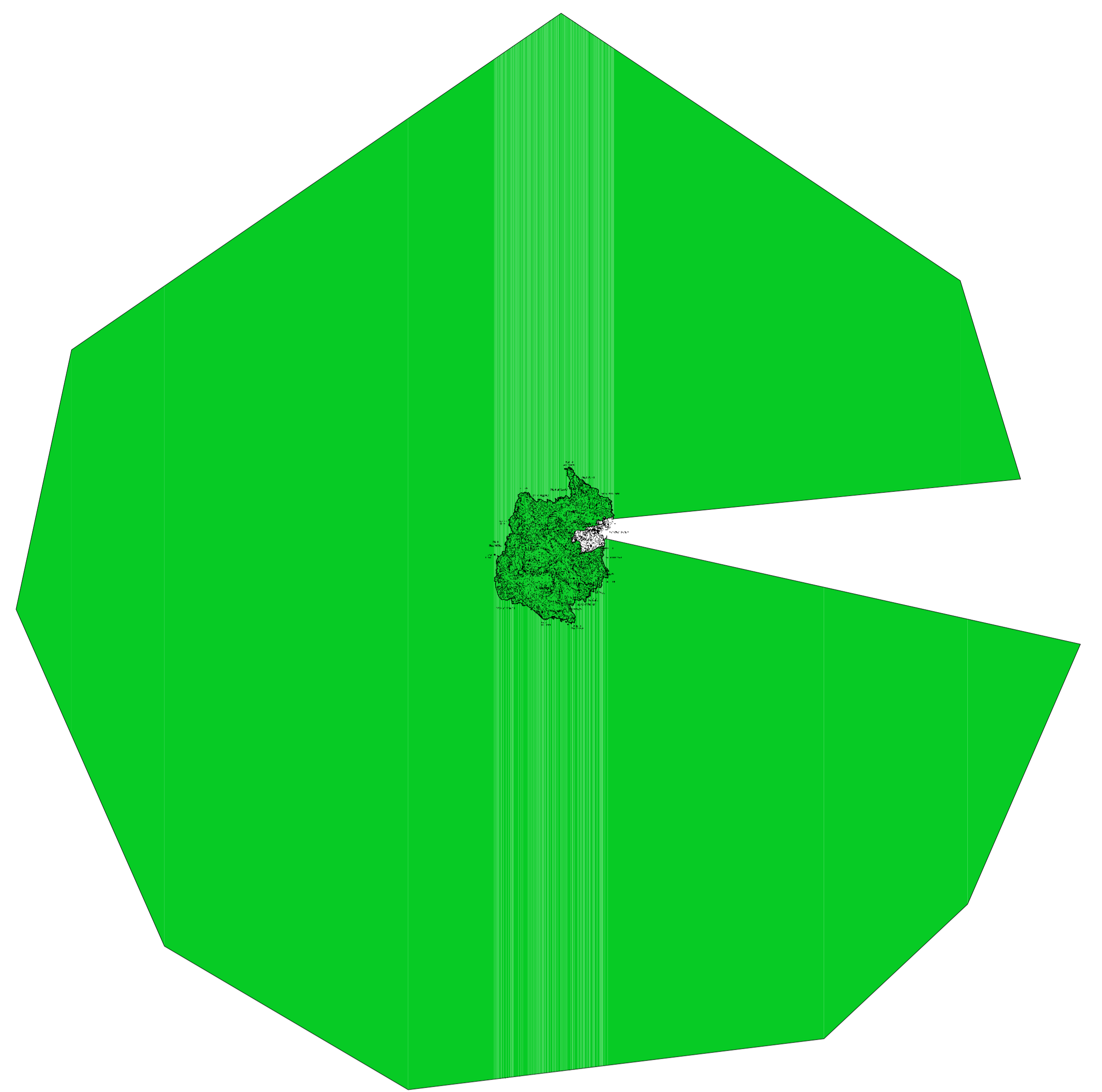
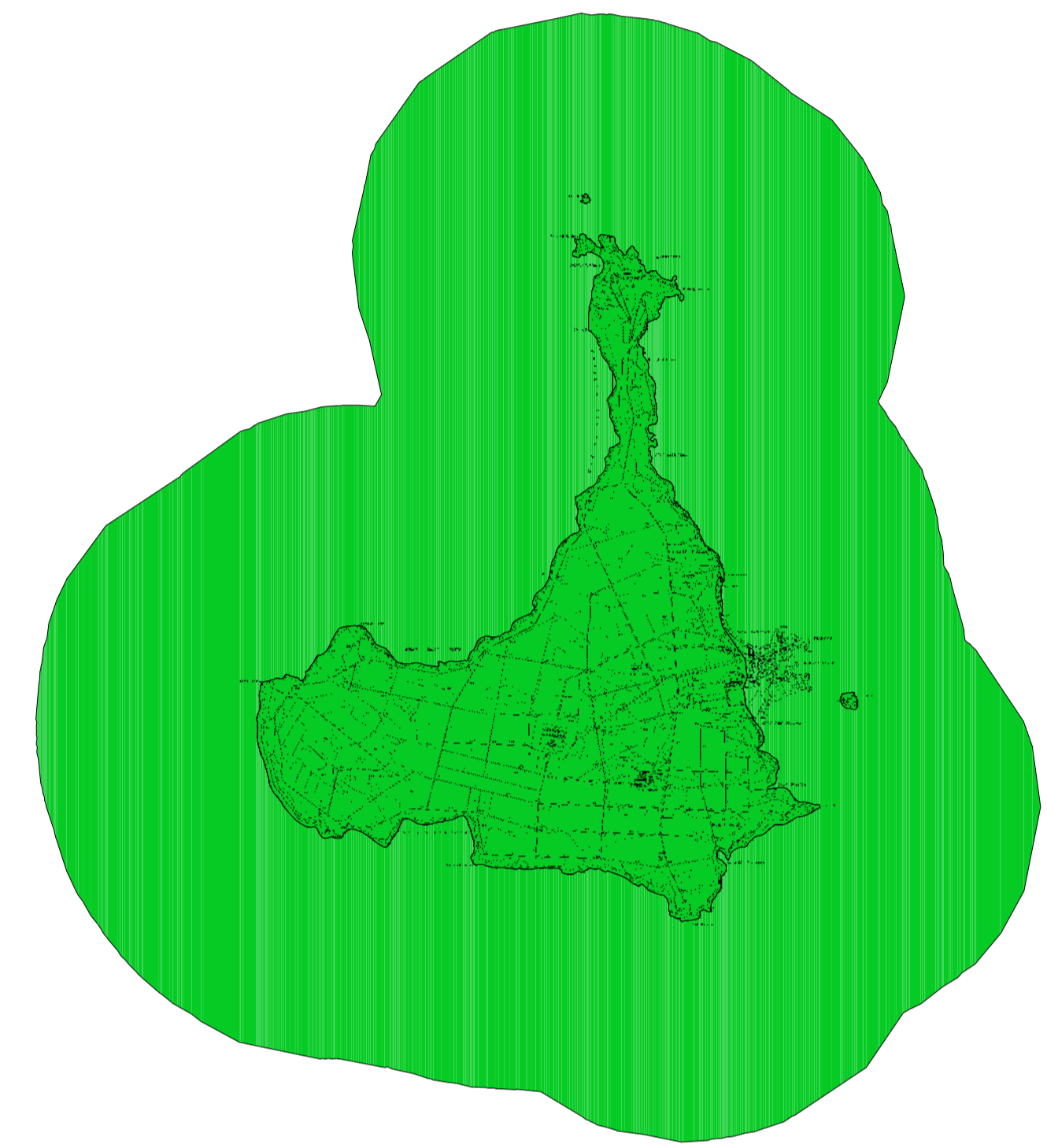
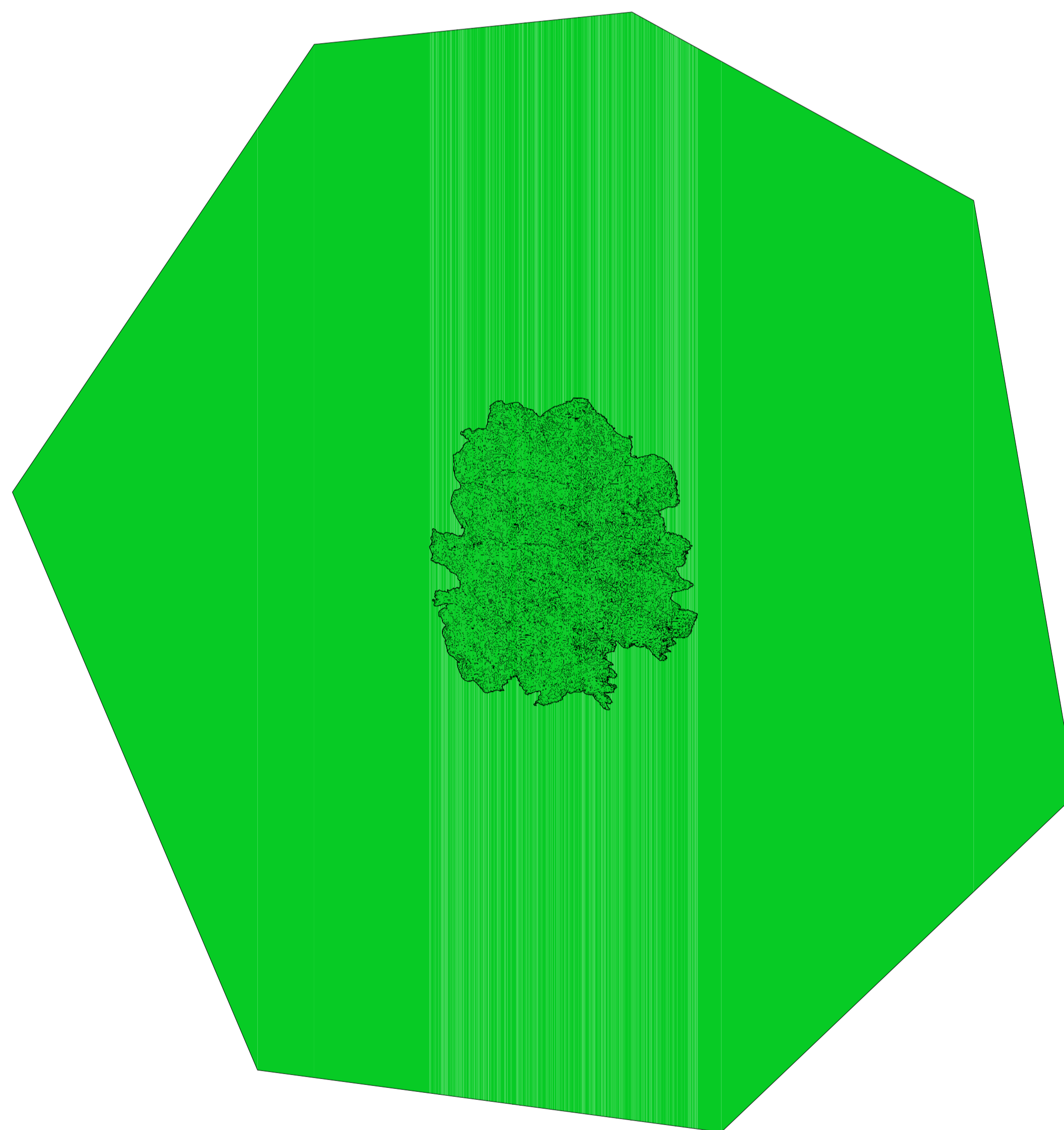

PARCO NAZIONALE DELL'ARCIPELAGO TOSCANO
Piano del Parco dell'Arcipelago Toscano

Z.P.S. ISOLE
 Gorgona, Capraia, Pianosa, Montecristo, Giglio, Giannutri
 scale 1:50.000
 IL PRESIDENTE: Dott. Mario Tozzi
 IL DIRETTORE: D.ssa Franca Zanichelli
 Gennaio 2008



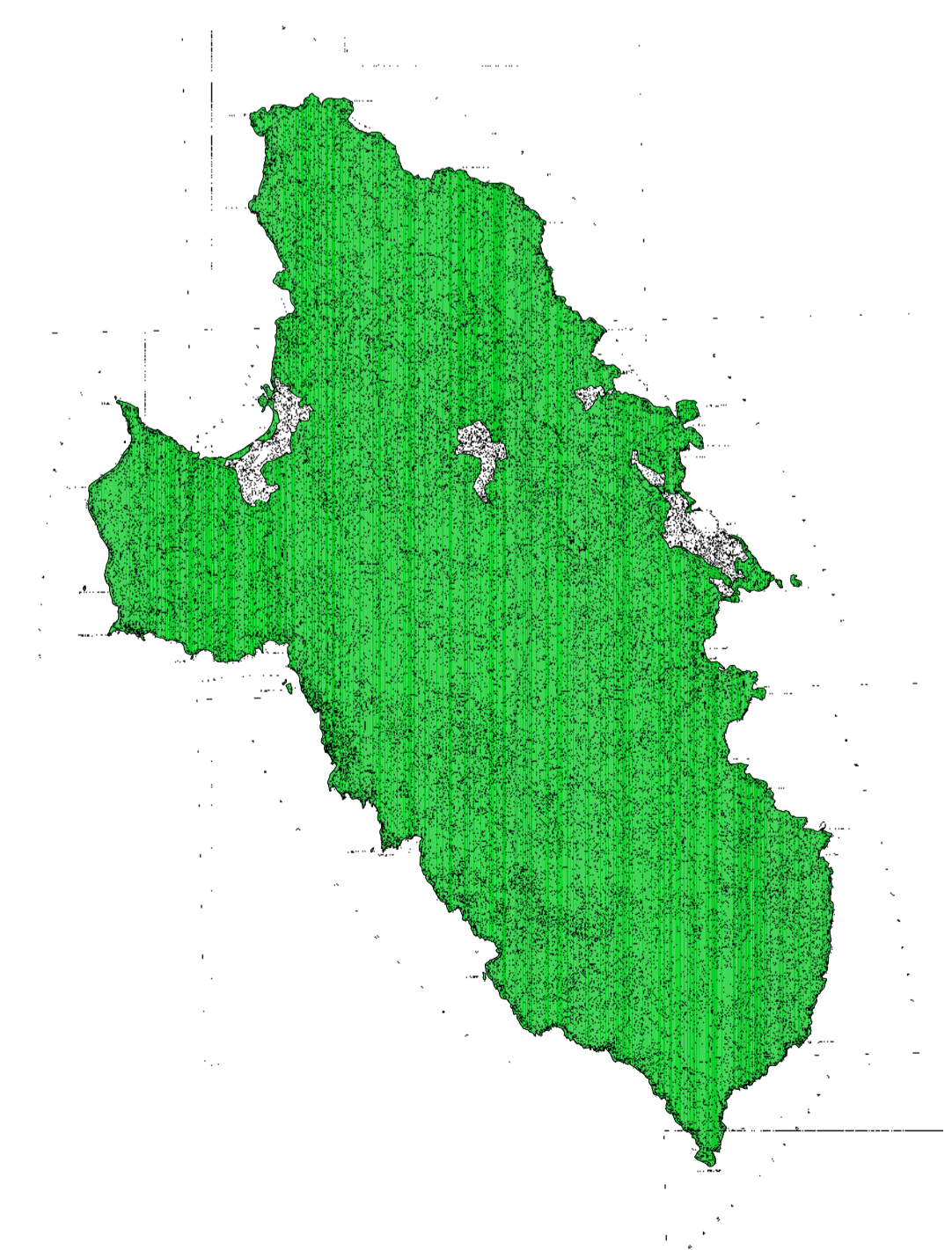
GORGONA



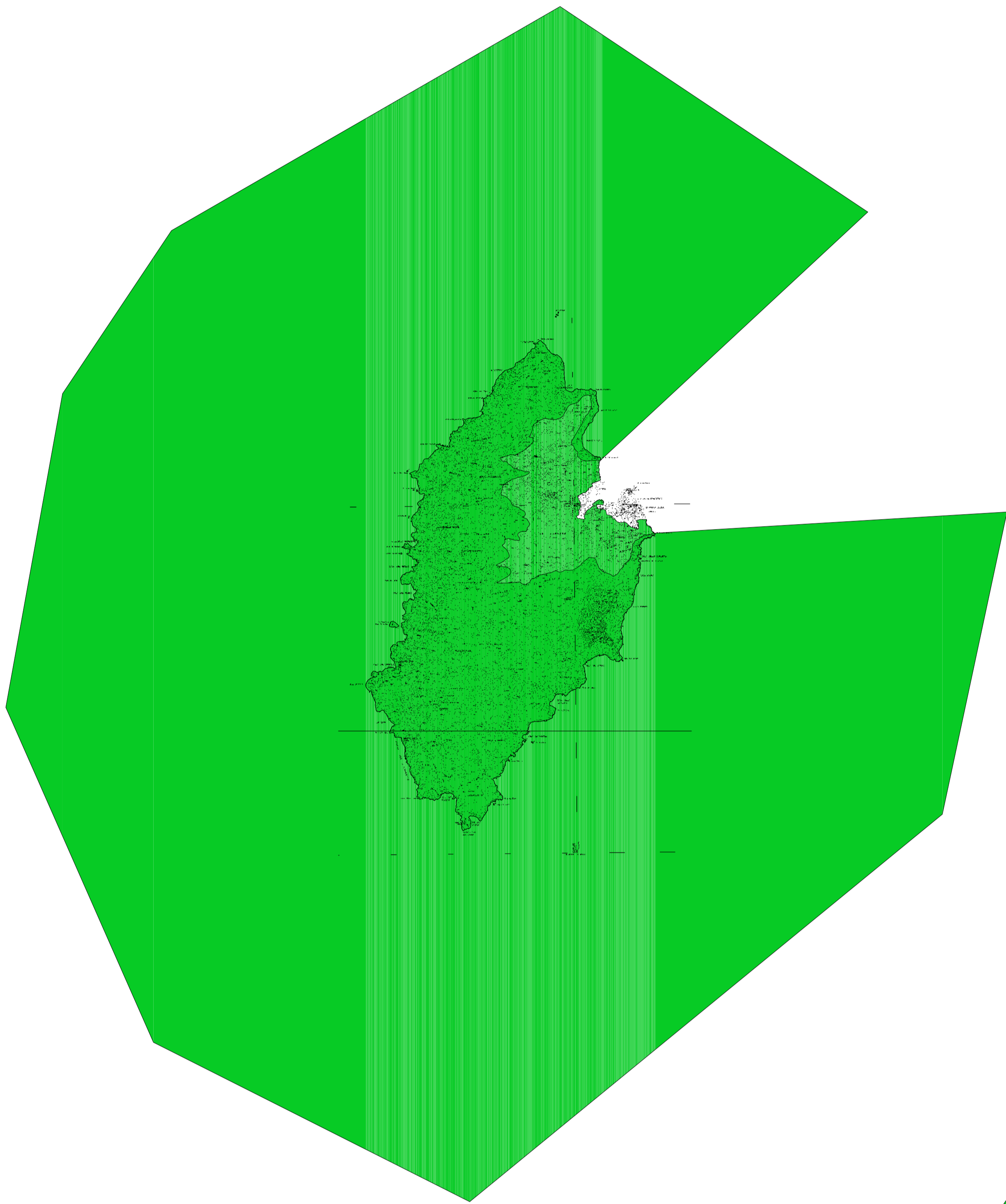
PIANOSA



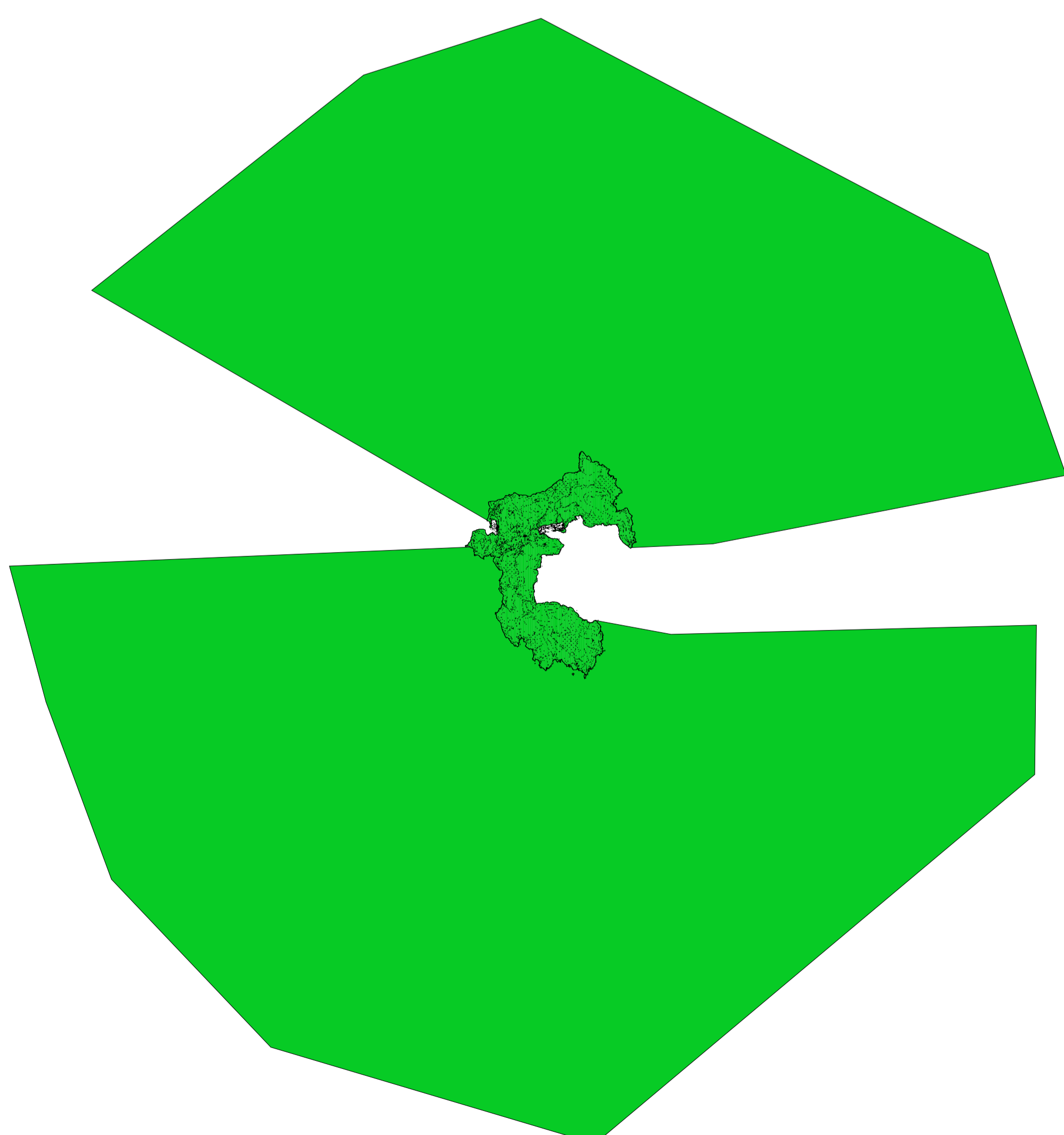
MONTECRISTO



GIGLIO



CAPRAIA



GIANNUTRI